

Arihant Seasons  
RERA No. UPRERAPRJ974543/02/2026 | [www.up-rera.in/viewprojects](http://www.up-rera.in/viewprojects)

**HDFC BANK LTD.**  
Account No. - 99992804202527 | IFSC Code: HDFC0000088  
Branch: Ansal Arcade, Sec. 18, NOIDA

Launch Date: 24-02-2026



ARIHANT  
GROUP

ARRIVES AT

22D Yamuna Express Way



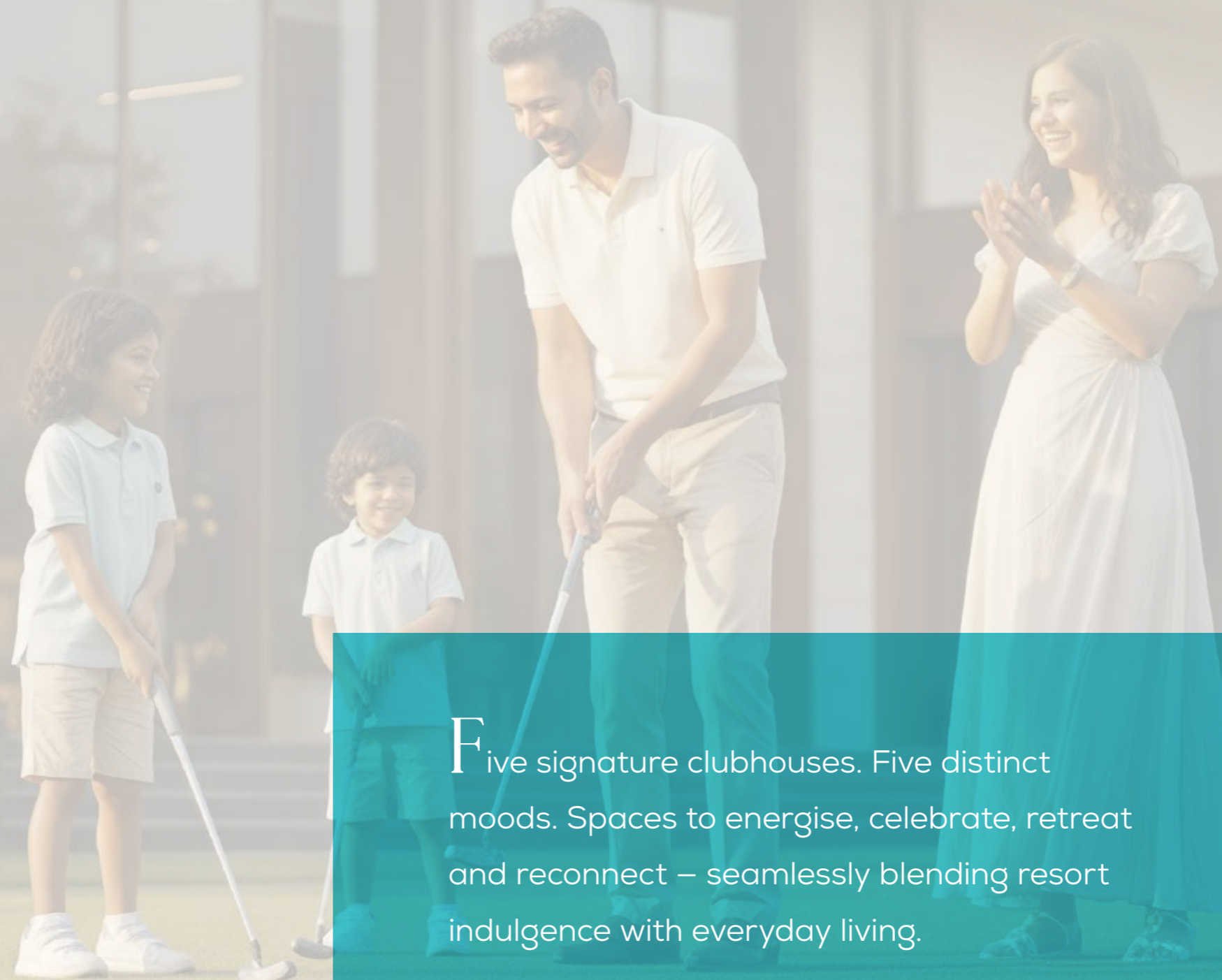
# A Residential Experience, Reimagined As A **Private Resort**

Where home feels like a holiday, with thoughtfully designed residences set amid lush greens and resort-style amenities.

Seamlessly connected outside, serenely calm within.

# 5 Grand Clubhouses

For An **Indulgent Lifestyle**



Five signature clubhouses. Five distinct moods. Spaces to energise, celebrate, retreat and reconnect – seamlessly blending resort indulgence with everyday living.

Curated. Immersive. Indulgent.



# Design That Feels Effortless, Yet **Exceptional**

Architecture experienced through light, space and flow.

Clean lines, generous volumes and thoughtful proportions create homes that breathe – embodying quiet modern luxury.

# Seven Acres Of Nature, Designed to Restore You



Step outside, and everything slows.  
Seven acres of curated greens shape mornings,  
soften afternoons and unwind evenings.  
A resort lifestyle that begins outdoors.

# The Residences

- Premium 3 & 4 Bed Abodes
- Dual Residences with private lawns & personal pools
- Homes curated for natural light, openness and uninterrupted views

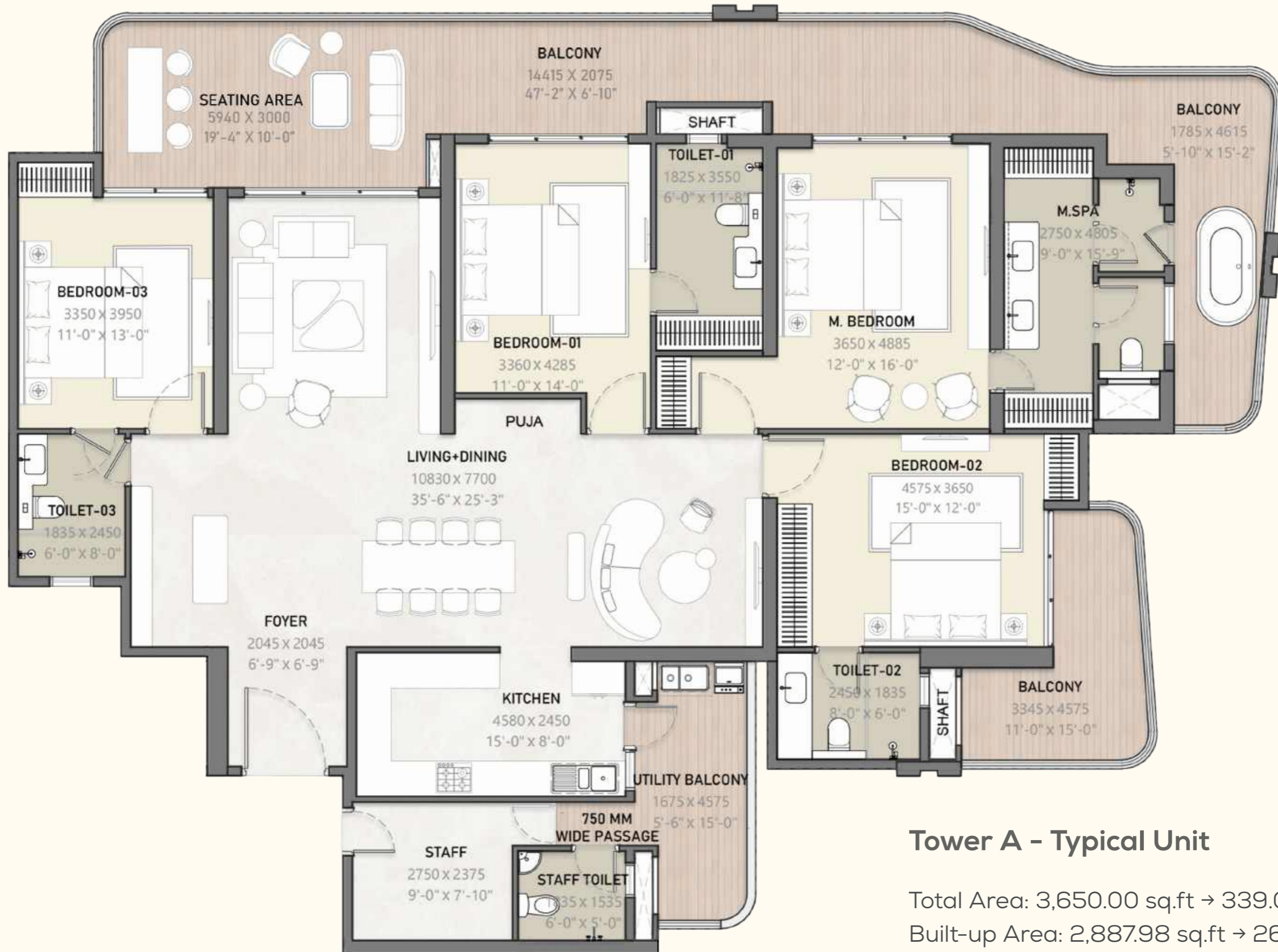
# The Grand Masterplan Layout



- LEGEND**
- |                               |                                 |                  |                                   |                      |                   |                       |
|-------------------------------|---------------------------------|------------------|-----------------------------------|----------------------|-------------------|-----------------------|
| 1 Drop off with water feature | 5 Kids Pool & Recreational Pool | 9 Seating area   | 13 Kids Play Area                 | 17 Driveway          | 21 Pet Park       | 25 Infinity Edge Pool |
| 2 Verdant passage             | 6 Lap Pool                      | 10 Barbeque Area | 14 Pedestrian Path, Jogging Track | 18 Buggy Parking     | 22 Walking Garden | 26 Temple             |
| 3 Lawn                        | 7 Waterlily Pond & Spa          | 11 Outdoor Gym   | 15 Landscape Court                | 19 Cricket Court     | 23 Skate park     |                       |
| 4 Banquet Lawn                | 8 Tennis Court                  | 12 Retail Plaza  | 16 Amphitheatre/ Lawn             | 20 Pickle Ball Court | 24 Serene Garden  |                       |



# Unit Plans



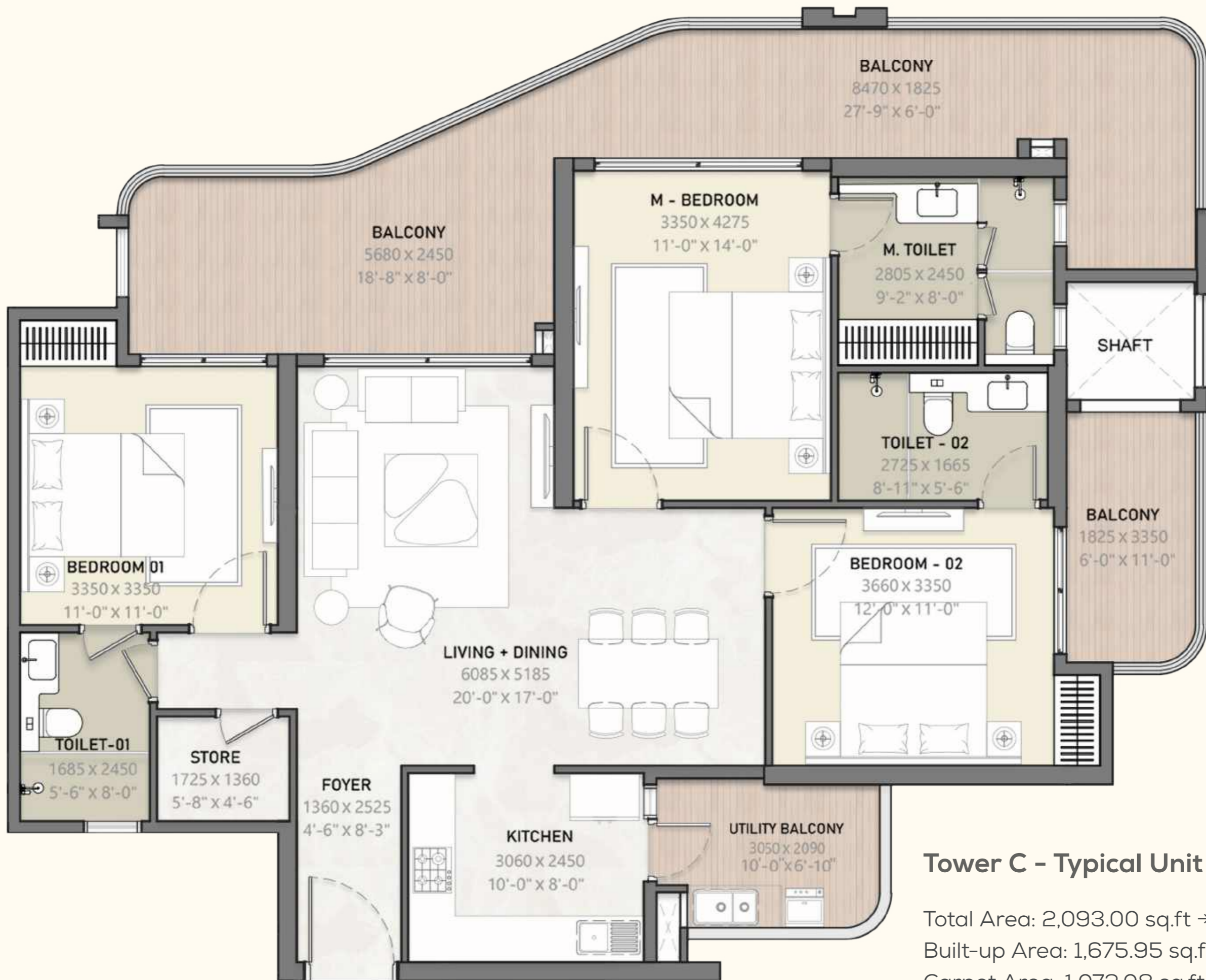
## Tower A - Typical Unit

Total Area: 3,650.00 sq.ft → 339.09 sq.m  
 Built-up Area: 2,887.98 sq.ft → 268.30 sq.m  
 Carpet Area: 1,959.03 sq.ft → 182.00 sq.m



## Tower B - Typical Unit

Total Area: 2,993.00 sq.ft → 278.06 sq.m  
 Built-up Area: 2,367.00 sq.ft → 219.90 sq.m  
 Carpet Area: 1632.88 sq.ft → 151.70 sq.m

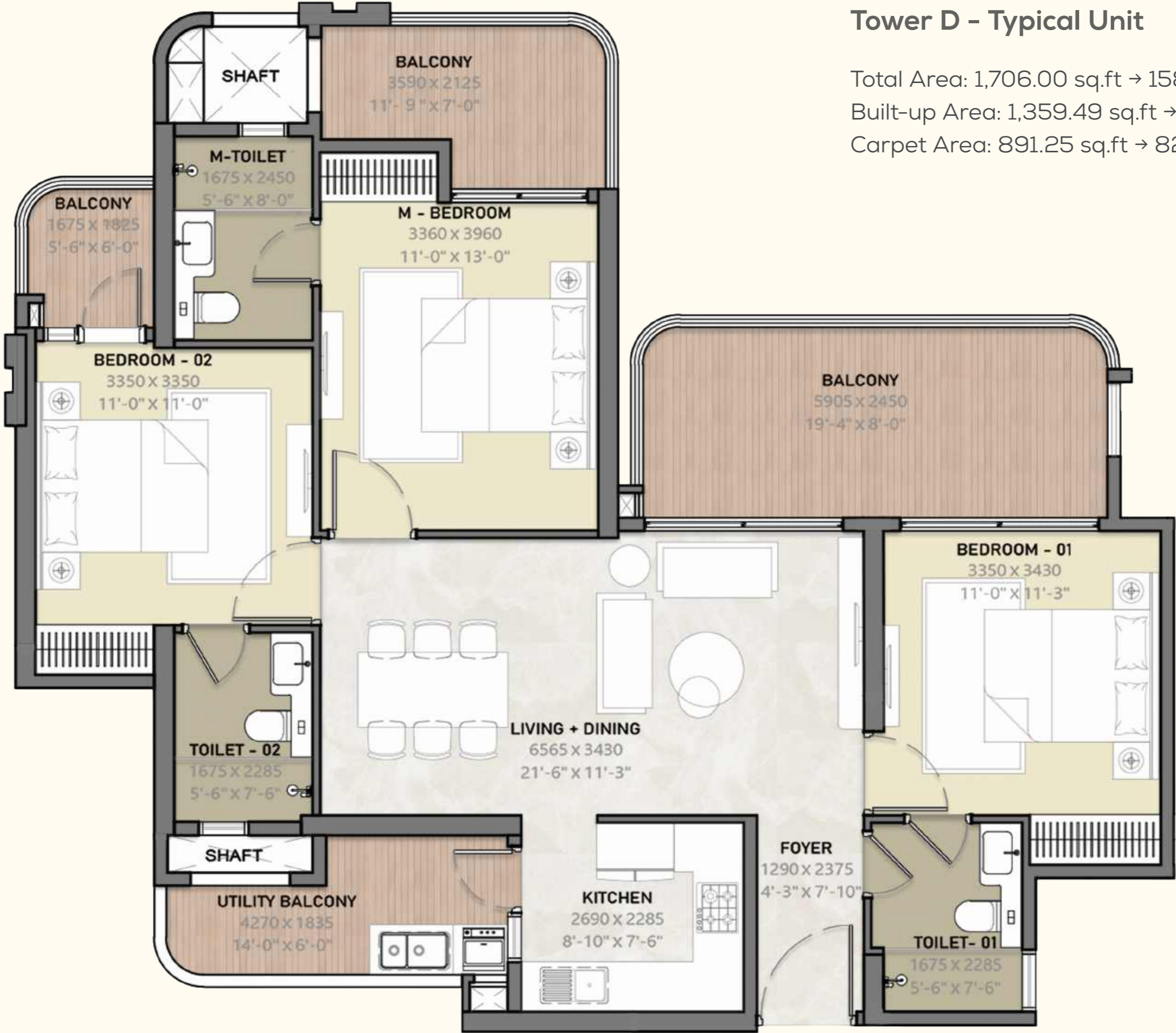


### Tower C - Typical Unit

Total Area: 2,093.00 sq.ft → 194.44 sq.m  
 Built-up Area: 1,675.95 sq.ft → 155.70 sq.m  
 Carpet Area: 1,072.08 sq.ft → 99.60 sq.m

### Tower D - Typical Unit

Total Area: 1,706.00 sq.ft → 158.49 sq.m  
 Built-up Area: 1,359.49 sq.ft → 126.30 sq.m  
 Carpet Area: 891.25 sq.ft → 82.80 sq.m



# Seamless Connectivity For A Resort Style Life

- Noida International Airport (Jewar): 15min drive.
- Pari Chowk: 15 min drive
- Eastern Peripheral Expressway: 15 min drive.
- Galgotias University & Noida International University: 10 min drive
- Gautam Buddha University and Sharda University approximately: 15 min drive
- Formula 1 Track & cricket stadium: 5 min Drive
- Film city: 5 min Drive

